

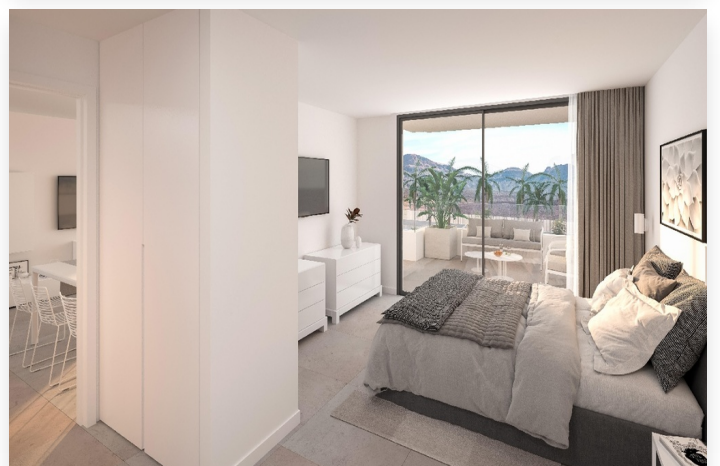


# Welcome to the haven of sophistication: new-build luxury apartments in Palm Mar!

258 800 - 467 700 €

Tenerife, Palm-Mar    Référence: 23915     1 - 2     2 - 3



## Tenerife, Palm-Mar

Stylish and luxurious apartments ranging from 1 to 2 bedrooms, including tempting penthouses, will soon be built in this new construction project. Each residence exudes elegance and is finished with high-quality materials, with abundant natural light embracing the spaces. Quality is central to these exclusive accommodations.

The icing on the cake is a large heated swimming pool that embraces the tropical greenery, with a special 'adults only' section for the ultimate relaxing experience. A true paradise surrounded by lush nature.

The complex is located right at the entrance to the protected nature reserve Malpaís de La Rasca. Here, volcanic lava flows reveal a landscape reminiscent of another planet, with highlights including La Montaña Grande and the Rasca Lighthouse. Ideal for endless walks, popular with mountain bikers and runners, and with numerous water sports opportunities along the coast.

Palm Mar, a quiet coastal village, offers all necessary amenities, including several restaurants, bars, pharmacies, doctors, supermarkets, bakeries and other shops. Moreover, it is just a 5-minute walk from the sea.

Experience the tranquility and sophistication of Palm Mar, just a ten-minute drive from the bustling tourist areas of Los Cristianos and Playa de Las Américas, and the airport. Discover a new level of luxury in this exquisite new construction project!

New apartments for sale. Modern apartments within walking distance of the beach, several bars, restaurants and all kinds of facilities. Choice of apartments and duplex penthouses.

1 - 2 bedrooms, 2 - 3 bathrooms, equipped open kitchen, terrace, communal garden and heated swimming pool.

### Spécification:

Proche des commodités  
Jardin commun  
Terras

Près de la mer  
Cuisine ouverte

Piscine commune  
Piscine chauffée

### Distance:

Aéroport: 12 km  
Magasin: 700 m

Golf: 1800 m  
Mer: 1 km

Restaurant: 180 m